

142 Elsie Street at Virginia

// / INFO /

BED/BATHS 4 Bedrooms/2.5 Baths
SQUARE FEET Over 2292 Sq.ft. (per appraisal)
PRICE \$1,298,000

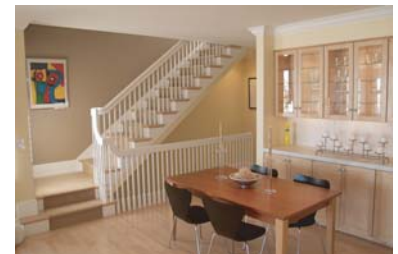
- 4 Bedrooms & 2.5 Baths
- 4 Level Penthouse style home
- Panoramic city views from every level
- Gourmet Kitchen with top-of-the-line appliances
- Custom finishes
- Hardwood Floors
- Two wood burning Fireplaces
- Easy commute to Routes 280 & 101
- Two car side-by-side garage
- Sellers are licensed Real Estate Agents



Living Room



Master Bedroom with Deck



Dinning Area

Overview:

Located on the western slope of Bernal Heights, recently highlighted in Gourmet Magazine for its edgy flair and emerging neighborhood restaurant scene, this sophisticated urban dwelling is just blocks from restaurants and shops on a quiet one way street. Custom crafted in 2000 by local builder Rick LeCount, the house is spread over four levels to maximize its dramatic city views. The infrastructure of the house includes CAT5 wiring, pre-wiring for cable and satellite tv, and forced air heat with built-in humidifier.

The Space:

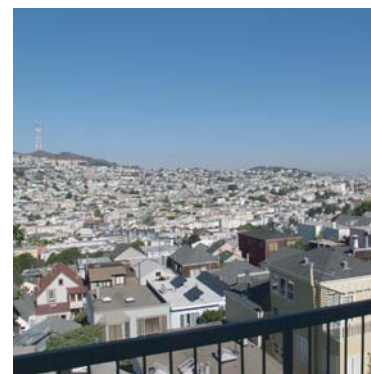
The entry level encompasses the formal entrance way, access to the 2 car side-by-side garage with built-in shelving and extra refrigerator, storage space and one large bedroom/office with private deck.

One flight down is the main level with open Living and Dining Rooms, Gourmet Kitchen, a half bathroom and a storage room with freezer. The Living Room includes a wood burning fireplace. This floor has maple hardwood floors throughout, as well as dimmed recessed lighting. The eat-in kitchen features Amana refrigerator, Thermador oven, gas range and vent, Bosch dishwasher and a large pantry. Custom moldings, window trims and banisters exemplify the extreme attention to detail in the house.

On the lower level, two private bedrooms each open out to a patio

and garden through French doors. The landscaped garden includes an irrigation system. This level also includes a bathroom, wine storage beneath the staircase and a large utility room with washer and dryer.

The master suite with its dramatic 14-foot cathedral ceiling consumes the entire top floor of the home. The room is cozy with a customized fireplace and mantle, yet open to the city views with French doors and a private deck. The master bathroom is attached and fitted with cement & glass shower and oversized Jacuzzi tub both taking in the city views with 7-foot windows. The master suite is completed with a large walk-in closet with custom shelving.



Views from every Room



SHOWN BY

payton STIEWE
A CREATIVE APPROACH TO REAL ESTATE

t //
e //
i //

415_401_9966

Payton@PaytonsList.com

www.PaytonsList.com

Sotheby's
INTERNATIONAL REALTY

This material is based upon information, which we consider reliable, but it has been supplied by third parties. We cannot represent that it is accurate or complete, and it should not be relied upon as such. This offering is subject to errors, omissions, changes of price or withdrawal without notice. Square footage not warranted as being correct. ©MMIII SOTHEBY'S INTERNATIONAL REALTY, INC. EQUAL HOUSING OPPORTUNITY _9/7/2004